

WEEKLY INFECTIOUS DISEASE BULLETIN
EPIDEMIOLOGICAL WEEK 17 26 Apr 2025 - 2 May 2026

	E Week	17	Median+ 2021 -2025	Cumulative first		17	Week
	2026*	2025		2026*	2025	Median	2021 -2025
FOOD/WATER-BORNE DISEASES							
Acute Hepatitis A	1	3	0	29	29	11	
Acute Hepatitis E	2	2	1	25	16	16	
Campylobacteriosis	5	13	13	190	179	179	
Cholera	0	0	0	0	2	0	
Paratyphoid	0	0	0	3	8	5	
Poliomyelitis	0	0	0	0	1	0	
Salmonellosis	26	18	29	379	377	377	
Typhoid	1	1	1	24	18	17	
VECTOR-BORNE DISEASES							
Chikungunya Fever	0	3	0	6	9	3	
Dengue Fever	20	107	128	534	1599	2846	
Dengue Haemorrhagic Fever	0	0	0	7	3	6	
Japanese Encephalitis	0	0	0	0	0	0	
Leptospirosis	0	6	0	17	26	18	
Malaria	0	0	0	6	10	4	
Murine Typhus	1	0	0	30	37	4	
Nipah Virus Infection	0	0	0	0	0	0	
Plague	0	0	0	0	0	0	
Yellow Fever	0	0	0	0	0	0	
Zika Virus Infection	0	0	0	5	4	1	
AIR/DROPLET-BORNE DISEASES							
Avian Influenza	0	0	0	0	0	0	
Diphtheria	0	0	0	0	0	0	
<i>Haemophilus influenzae</i> type b	0	0	0	0	0	0	
Legionellosis	1	0	0	9	14	7	
Measles	2	1	0	32	8	5	
Meningococcal Disease	0	1	0	2	3	1	
Middle East Respiratory Syndrome [^]	0	0	0	0	0	0	
Mumps	3	5	3	79	81	63	
Pertussis	0	0	0	30	33	2	
Pneumococcal Disease (Invasive)	2	1	1	42	42	42	
Rubella	0	0	0	0	0	0	
Severe Acute Respiratory Syndrome	0	0	0	0	0	0	
OTHER DISEASES							
Acute Hepatitis B	0	0	0	7	12	12	
Acute Hepatitis C	0	0	0	3	12	5	
Botulism	0	0	0	0	0	0	
Ebola Virus Disease	0	0	0	0	0	0	
Melioidosis	1	2	1	12	20	14	
Mpox [#]	1	0	NA	13	5	NA	
Tetanus	0	0	0	0	0	0	
POLYCLINIC ATTENDANCES - AVERAGE DAILY NUMBER							
Acute Upper Respiratory Infections	2667	2781	2590				NA
Acute Conjunctivitis	102	92	65				NA
Acute Diarrhoea	483	443	416				NA
Chickenpox	7	8	6				NA
Hand, Foot And Mouth Disease	21	51	21				NA
HIV/STI/TB NOTIFICATIONS							
	2026	Mar		Cumulative 2026			
HIV/AIDS	18			39			
Legally Notifiable STIs**	1344			3673			
Tuberculosis	77			240			

* Provisional figures

Added to the list of notifiable diseases as of 30 Jun 2022. The third case of Mpox clade Ib infection was detected in E-week 17 2026. All other cases were clade IIb infections.

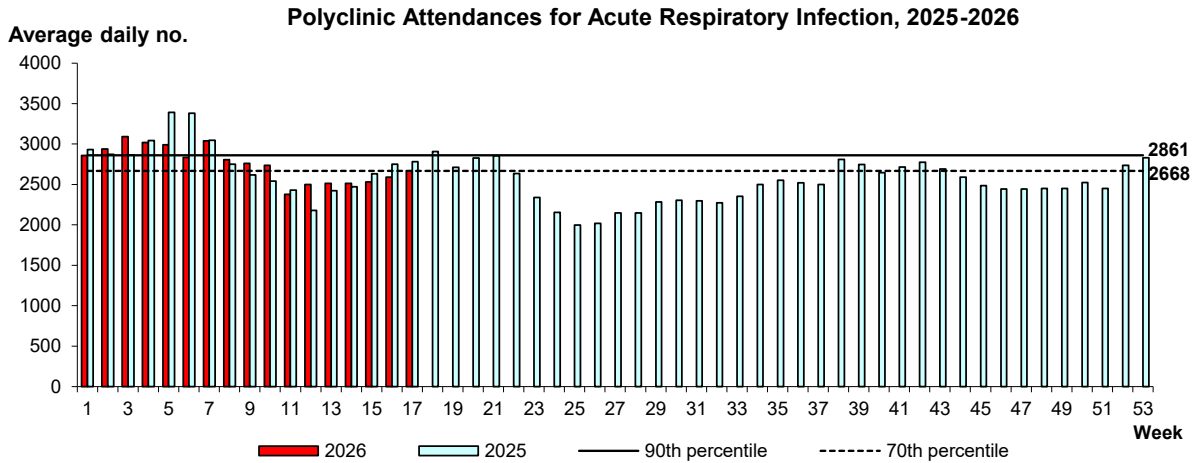
[^] With effect from E-week 27, 2023, only confirmed cases of MERS will be reported, instead of the number of persons tested.

** With effect from January 2026, national-level STI data will be reported.

Acute Respiratory Infection (ARI) Situation in Singapore 2026

ARI indicators for E-week 17 (26 Apr 2025 - 2 May 2026) were as follows:

The average daily number of patients seeking treatment in the polyclinics for ARI was 2667 (over 4.5 working days) in E-week 17.



In E-week 17, the top respiratory pathogens among adult and paediatric samples from the National Surveillance Programme for Acute Respiratory Infection[§] (ARI) were:

- Adult samples: Human rhinovirus/enterovirus (20%), SARS-CoV-2 (11%), and parainfluenza viruses (9%).
- Paediatric samples: Human rhinovirus/enterovirus (33%), SARS-CoV-2 (15%), and parainfluenza viruses (14%).

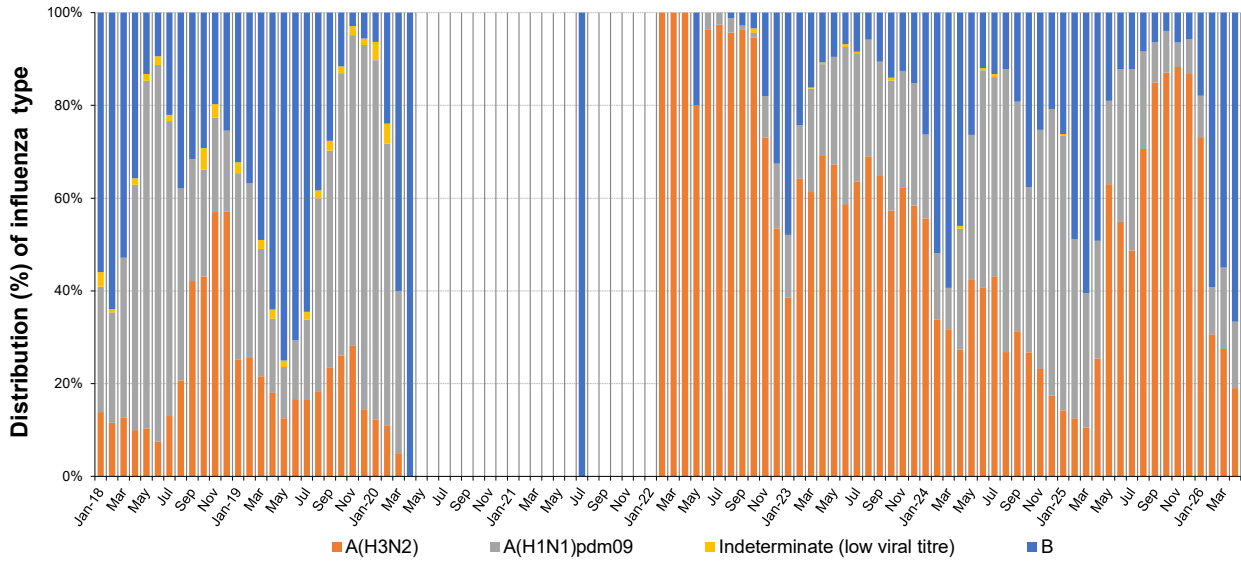
[§] CDA monitors the trends of respiratory pathogens in the community through our sentinel surveillance programme for Acute Respiratory Infections (ARI) which includes polyclinics and selected general practitioner (GP) clinics.

COVID-19 and Influenza

The positivity rate for influenza among ILI samples (n= 121) in the community was 7% in E-week 17. The positivity rate for COVID-19 among ARI samples (n= 229) in the community was 14% in E-week 17.

Of the 21 specimens tested positive for influenza in April 2026, three were positive for influenza A(pH1N1) (14.3%), four were positive for influenza A(H3N2) (19.0%), and 14 were positive for influenza B (66.7%).

Monthly Influenza Surveillance

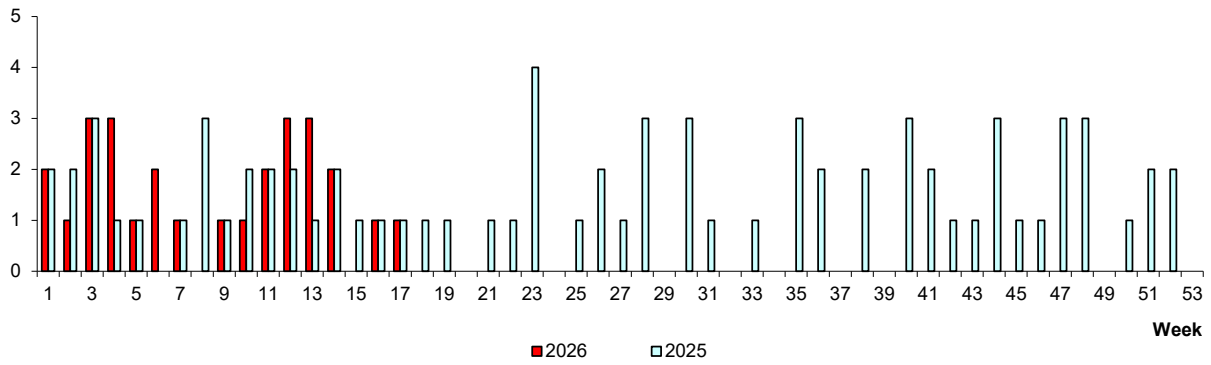


Based on influenza-like illness (ILI) samples from GPs and polyclinics

WEEKLY INCIDENCE OF FOOD/WATER-BORNE DISEASES, 2025-2026

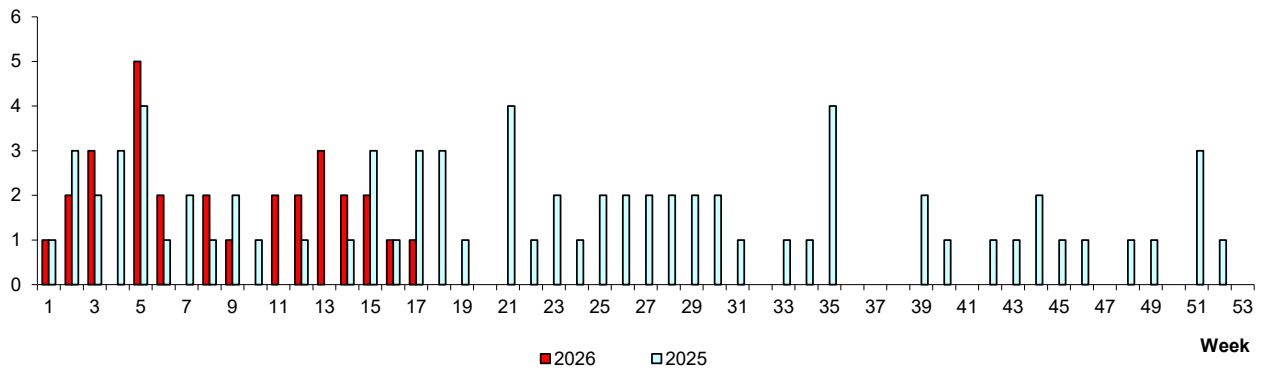
No. of Cases

Paratyphoid/Typhoid



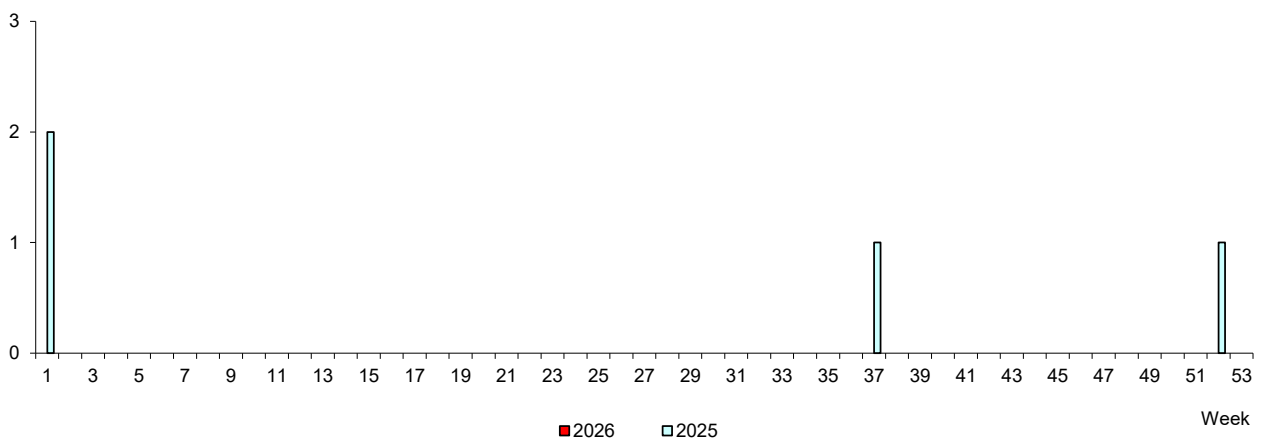
No. of Cases

Acute Hepatitis A

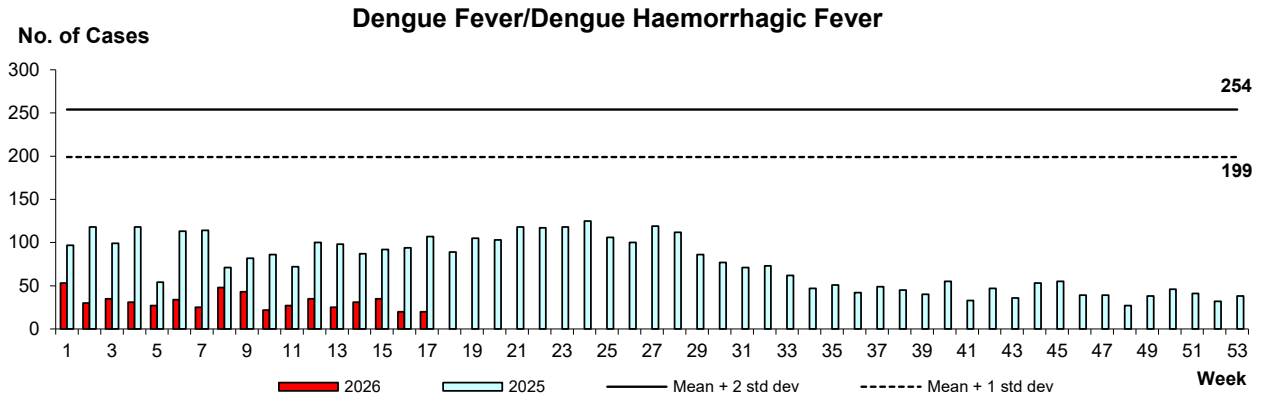


No. of Cases

Cholera



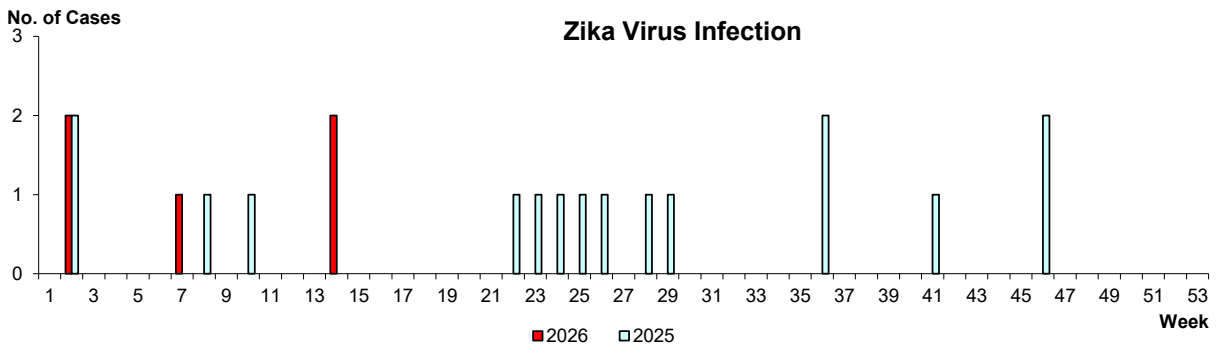
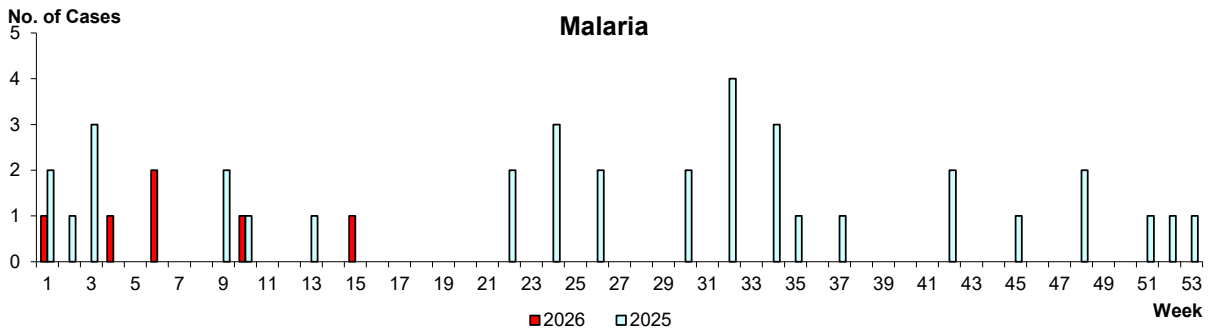
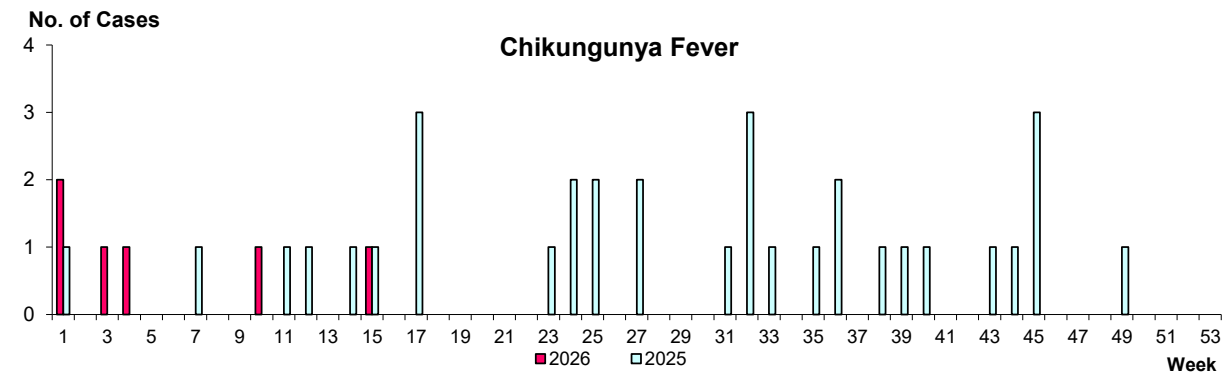
WEEKLY INCIDENCE OF VECTOR-BORNE DISEASES, 2025-2026



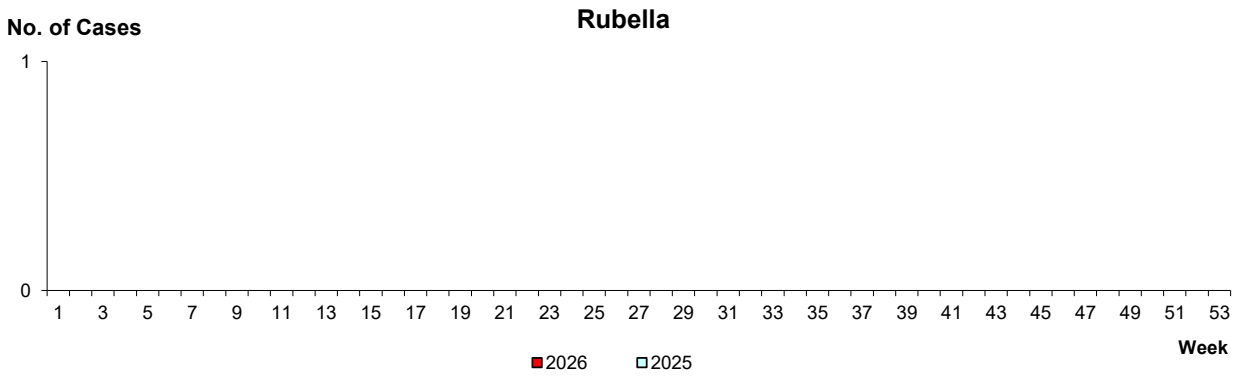
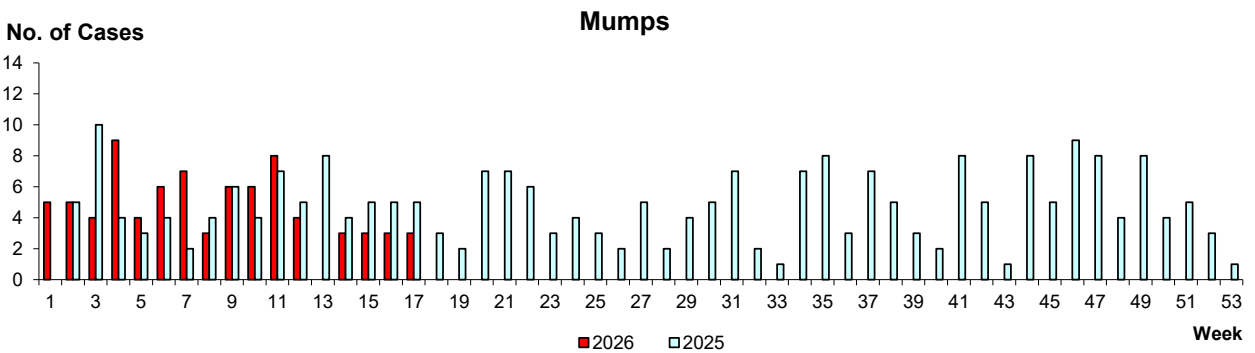
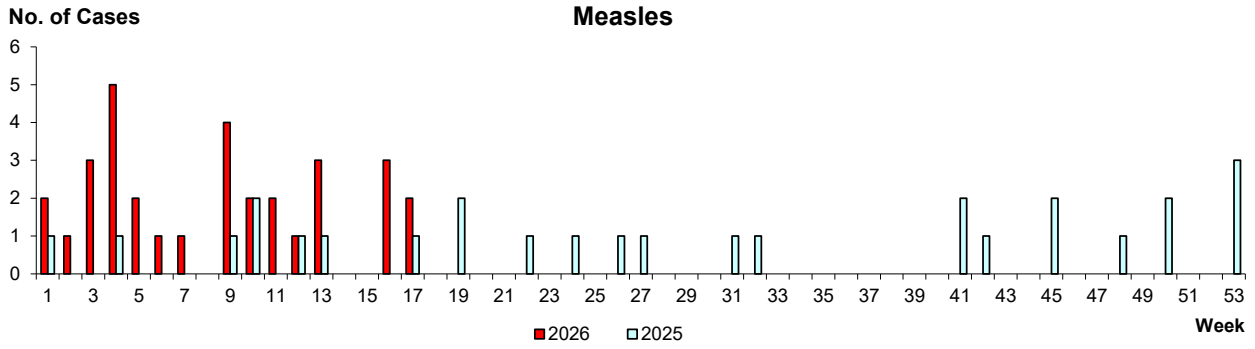
The number of dengue notifications was 20 in E-week 17.

The number of hospital admissions remains stable at 1 in E-week 17, compared to 1 in E-week 16.

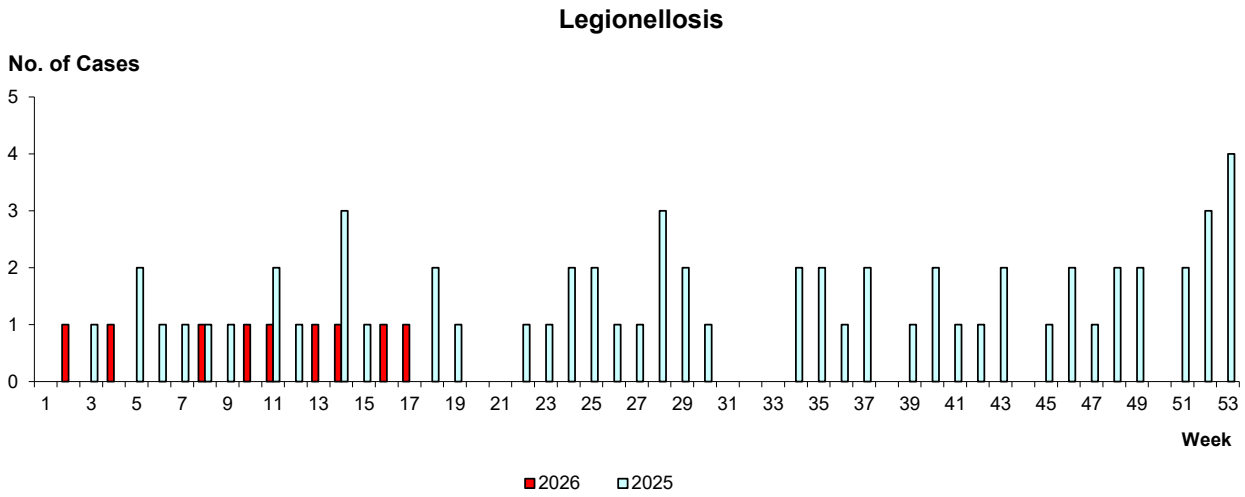
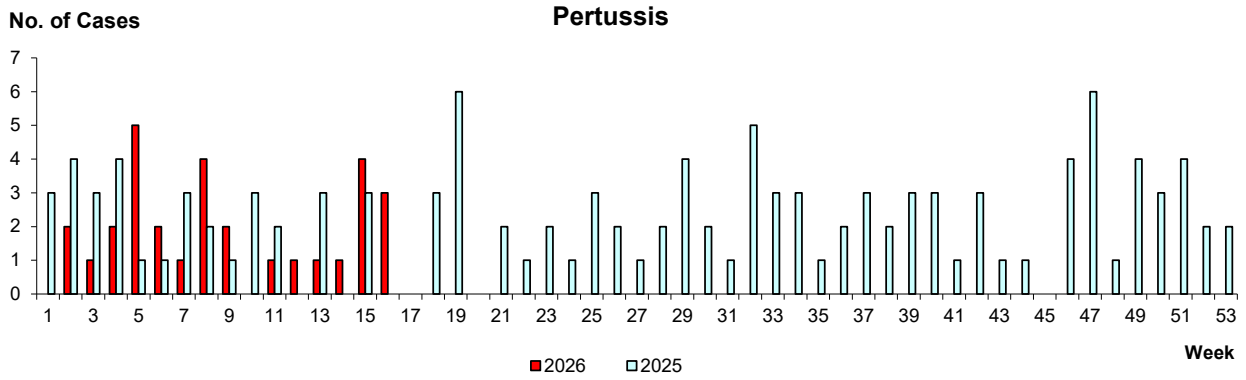
Preliminary results of all positive dengue samples serotyped in April 2026 showed DEN-1, DEN-2, DEN-3 and DEN-4 at 3.7%, 55.6%, 33.3% and 7.4% respectively.



WEEKLY INCIDENCE OF AIR/DROPLET-BORNE DISEASES, 2025-2026



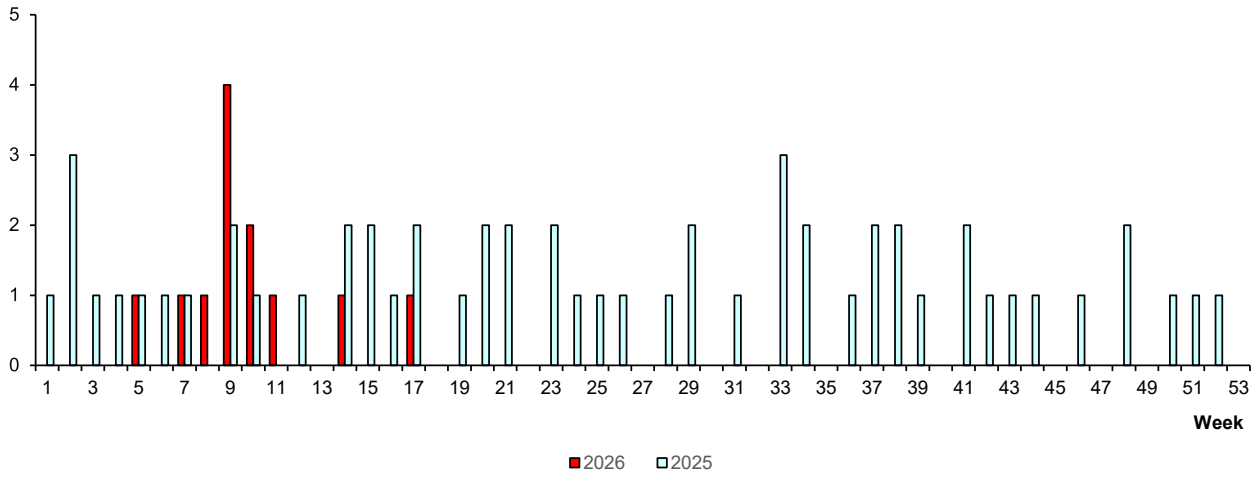
WEEKLY INCIDENCE OF AIR/DROPLET-BORNE DISEASES, 2025-2026



WEEKLY INCIDENCE OF OTHER DISEASES, 2025-2026

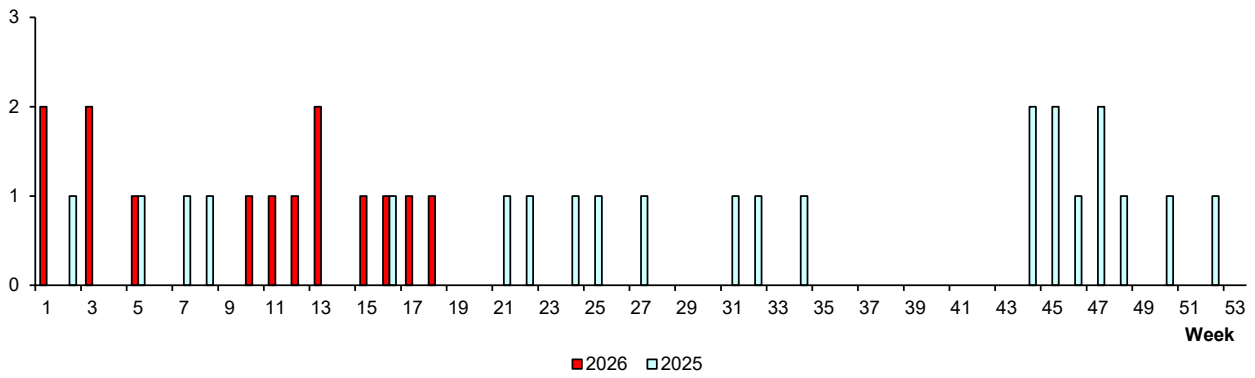
Melioidosis

No. of Cases



Mpox

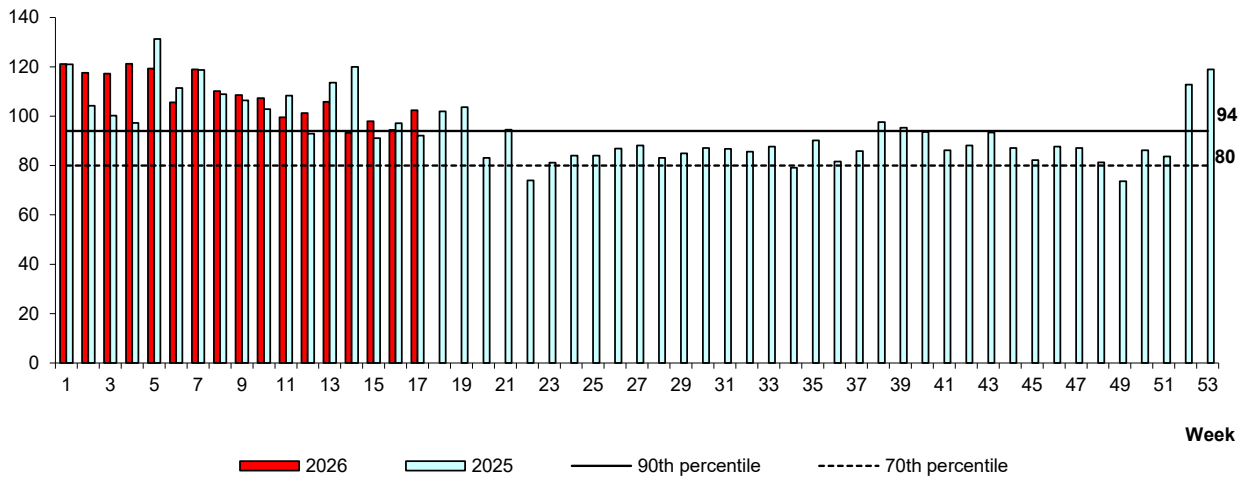
No. of Cases



POLYCLINIC ATTENDANCES, 2025-2026

Conjunctivitis

Average daily no.

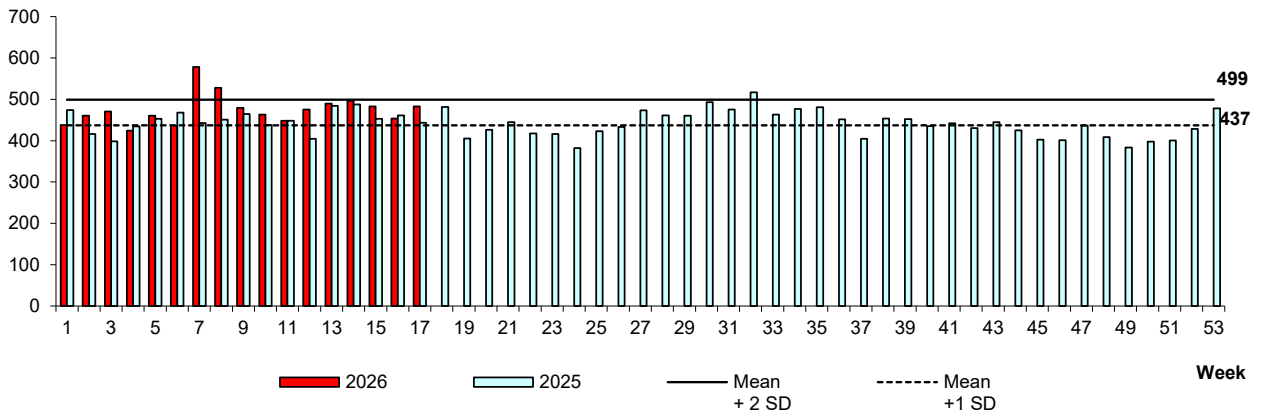


Week

■ 2026 □ 2025 — 90th percentile - - - - 70th percentile

Diarrhoeal Illness

Average daily no.

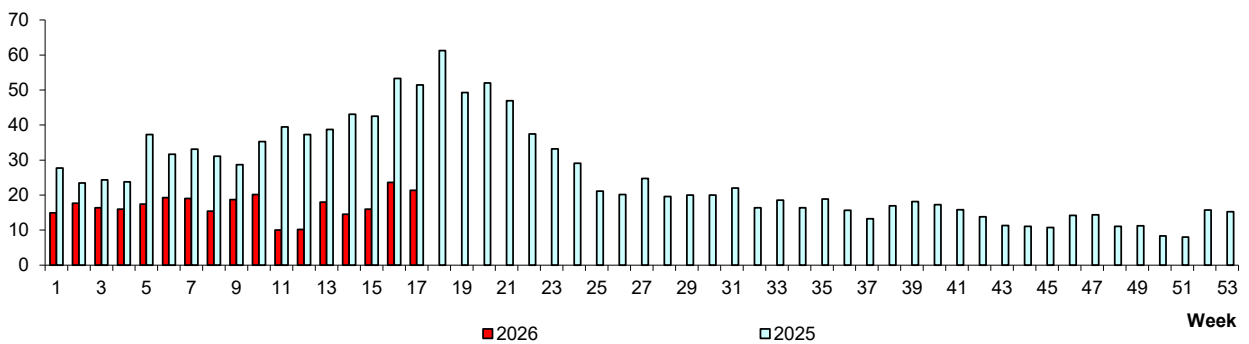


Week

■ 2026 □ 2025 — Mean + 2 SD - - - - Mean + 1 SD

Hand, Foot & Mouth Disease

Average daily no.



Week

■ 2026 □ 2025